

Learn More about your medications

# Have you heard about “Kusuri-no-Shiori”\* ?

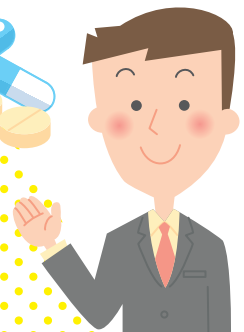


\*Drug Information Sheets called “Kusuri-no-Shiori” . The information in the “Kusuri-no-Shiori” sheets is based on approvals granted by the drug regulatory authority in Japan. Approval details may vary by country.

All medicines have both undesirable side effects (risks) and intended efficacies (benefits). The goal is to minimize adverse reactions and maximize efficacy. To ensure patients receive the full benefits of treatment, they should learn about their medications and fully cooperate with treatment.



This sheet provides information on the drugs you get from your doctor.



The drug manufacturer of each product prepares these sheets, so the information is reliable.

The Kusuri no Shiori sheets are written in simple language and summarize those facts that every patient should know about the drugs they are using.



Short descriptions are provided in plain language.

A B C



Sheets are provided in both Japanese and (for many products) English

How to access this info



Sheets can be downloaded from the RAD-AR website

<https://www.rad-ar.or.jp/siori/english/index.html>

Kusuri-no-Shiori



search for Kusuri no Shiori or view directly from a smartphone



This is type of information you can find in the sheets



## Drug Information Sheet("Kusuri-no-Shiori")

Internal  
Revised: 07/2020

The information on this sheet is based on approvals granted by the Japanese regulatory authority. Approval details may vary by country. Medicines have adverse reactions (risks) as well as efficacies (benefits). It is important to minimize adverse reactions and maximize efficacy. To obtain a better therapeutic response, patients should understand their medication and cooperate with the treatment.

**Brand name:**XXXXXX TABLETS 100mg "RADAR"

**Active ingredient:** xxxxxx

**Dosage form:** white tablet, diameter: 9.3mm, thickness: 3.9mm

**Print on wrapping:** xxxxxx 100mg, 鎮痛・抗炎症・解熱剤



### Effects of this medicine

This medicine suppresses prostaglandin synthesis that causes inflammation, and acts to ease swelling/pain induced by inflammation as well as to bring down fever. It is usually used to treat rheumatoid arthritis and osteoarthritis. It is also used to reduce pain and inflammation after surgery, wounds and tooth removal, as well as to bring down fever or ease pain induced by acute inflammation of upper respiratory tract.

### Before using this medicine, be sure to tell your doctor and pharmacist

- If you have previously experienced any allergic reactions (itch, rash, etc.) to any medicines.
- If you have: peptic ulcer, blood disease, liver/kidney/heart disorders, aspirin asthma or its history.
- If you are pregnant or breastfeeding.
- If you are taking any other medicinal products. (Some medicines may interact to enhance or diminish medicinal effects. Beware of over-the-counter medicines and dietary supplements as well as other prescription medicines.)

### Dosing schedule (How to take this medicine)

- Your dosing schedule prescribed by your doctor is(( to be written by a healthcare professional))
- In general, for adults, take 1 tablet (60 mg of xxxxxx) at a time, 3 times a day. The dose may be adjusted according to your age and symptoms. Avoid taking the medicine on an empty stomach. Strictly follow the instructions.
- If you miss a dose, take the missed dose as soon as possible. If it is almost time for the next dose, skip the missed dose and continue your regular dosing schedule. You should never take two doses at one time.
- If you accidentally take more than your prescribed dose, consult with your doctor or pharmacist.
- Do not stop taking this medicine unless your doctor instructs you to do so.

### Precautions while taking this medicine

- You may feel dizziness/lightheadedness due to decreased blood pressure. Therefore pay close attention when driving a car, working at heights or operate dangerous machinery while taking this medicine.
- Do not take grapefruit juice and the medicine together as it may intensify the effect of the medicine.

### Possible adverse reactions to this medicine

The most commonly reported adverse reactions include gastric discomfort, pain in the pit of the stomach, stomachache, nausea/vomiting, loss of appetite, edema/swelling, rash, hives, drowsiness, fever, and itch. If any of these symptoms occur, consult with your doctor or pharmacist.

**The symptoms described below are rarely seen as initial symptoms of the adverse reactions indicated in brackets. If any of these symptoms occur, stop taking this medicine and see your doctor immediately.**

- pale face, breathing difficulty, cold sweat [shock, anaphylaxis]
- nose/gums bleeding, bruising on the limbs [agranulocytosis, hemolytic anemia, leukopenia, thrombocytopenia]
- redness/swelling/rash/blister of skin/mucous membrane, fever, general malaise [toxic epidermal necrosis, oculomucocutaneous syndrome]
- decreased urine output, swelling, loss of appetite [acute renal disorder, nephrotic syndrome, interstitial nephritis]
- breathing difficulty, general swelling [congestive heart failure]

**The above symptoms do not describe all the adverse reactions to this medicine. Consult with your doctor or pharmacist if you notice any symptoms of concern other than those listed above.**

### Storage conditions and other information

- Keep out of reach of children. Store away from direct sunlight, heat and moisture.
- Discard the remainder. Do not store them.

**For healthcare professional use only** / /

For further information, talk to your doctor or pharmacist.

The effects and uses (Indications)

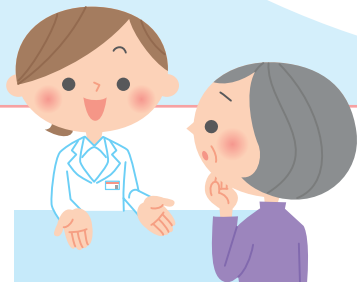
Which patients should be cautious when using this product

How to take/use the medication  
Amount and frequency of use  
What to do if you forget to take/use a dose  
If you accidentally take/use too much  
Please follow the instructions you received from your doctor and/or pharmacist.

Cautions:  
How meals can affect how the drug works or if the drug can make you drowsy.

Main side effects that you may experience after using this medicine.  
If you have any troubling symptoms, please consult your doctor or pharmacist before you stop taking/using your medicine.

Instructions on how to store your medicine



If you have questions after reading the Kusuri no Shiori, consult your doctor or pharmacist.